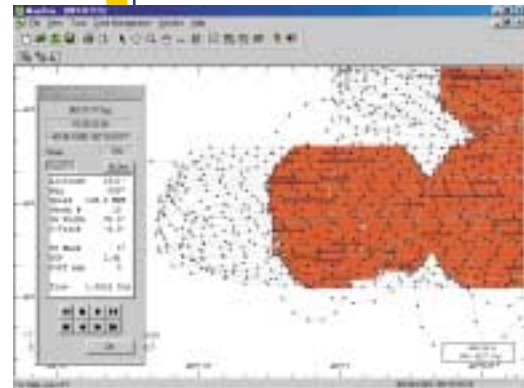


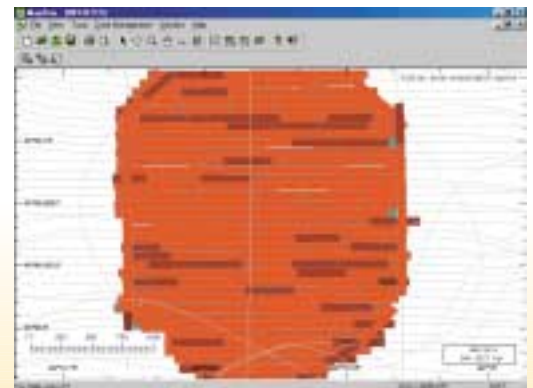
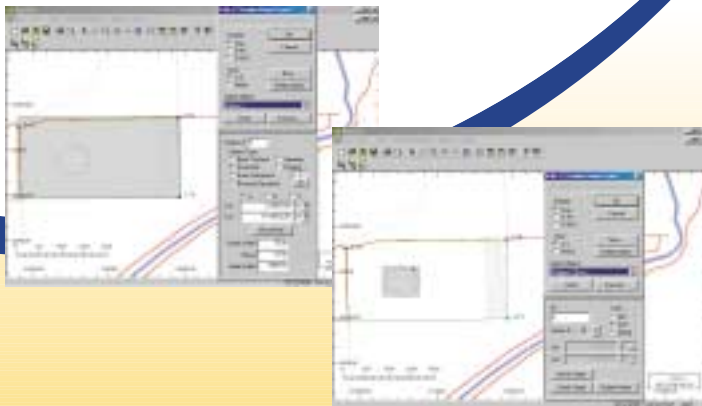
absolute  
**precision**

**MapStar**

- SATLOC'S Windows MapStar program allows the operator and the grower, the ability to examine the quality of every job. You as a MapStar user, have a vast amount of information at your fingertips. This information includes exact positioning and rate of spray application, precise time and date record, vehicle ground speed, track, altitude, as well as GPS position quality.

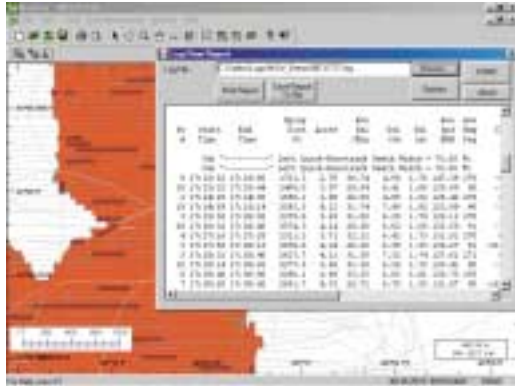


- Windows Mapstar also serves as a Mission Planner. This Mission Planning software allows the user to pre-program a spray mission directly from his office computer. The operator can program the patterns to be used and his application areas (Polygons).



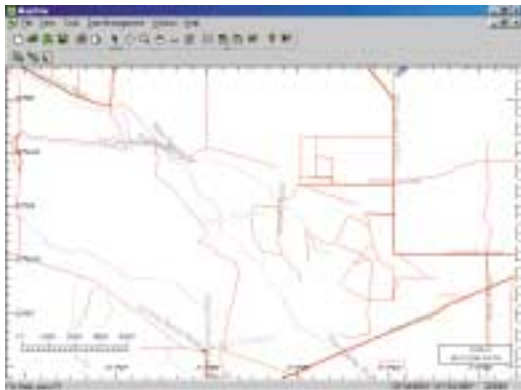
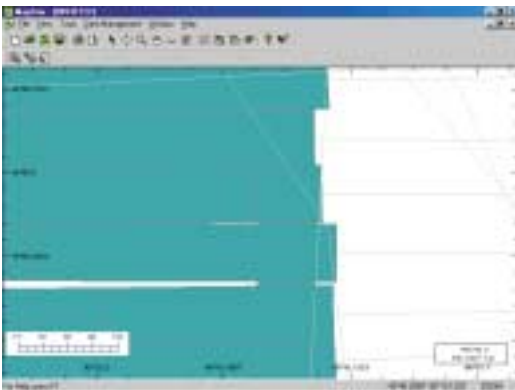
- The MapStar system also allows the user to zoom-in on a job and take very precise measurements of distance between swaths, gaps or even entire application areas. In addition to this, the system will display the amount of acres applied per pass.

positioned for **your success**



• Once the user is finished viewing the work, he can then make a print out of the job that was done. Every application job is saved to the computer's hard drive, and can be archived to keep as a permanent record.

• The MapStar program offers the operator a powerful tool that will help to analyze a spray job more effectively than any kind of human observation. To enhance the system, custom digital background maps, as well as GIS conversion utilities are available. The user can import different Shape, dxf and mid/mif files, or export log files into the same formats (or as general ascii files). More importantly, this software demonstrates positive proof of application. The MapStar program offers a practical data management system with features that are easy to learn and simple to use.



Telephone: (480)348-9919  
 Fax: (480)348-6370  
 7560 E. Redfield Rd • Suite B  
 Scottsdale • AZ • USA • 85260

[www.satloc.com](http://www.satloc.com)

Official Satloc Dealer

Avery label #05260 (laser print)